



palmki

Biometric palmscanning:

THE new way of AUTHENTICATION



palmki
by PerfectID

Why Biometry?



palmki
by PerfectID

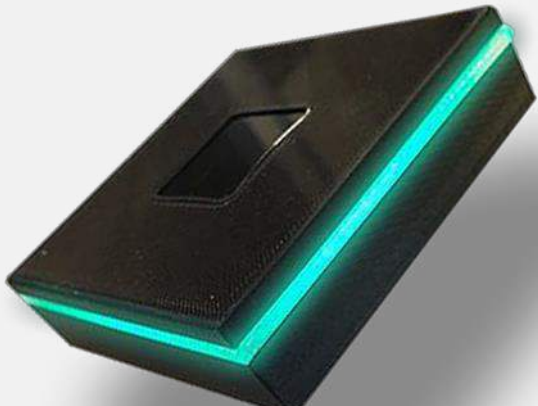
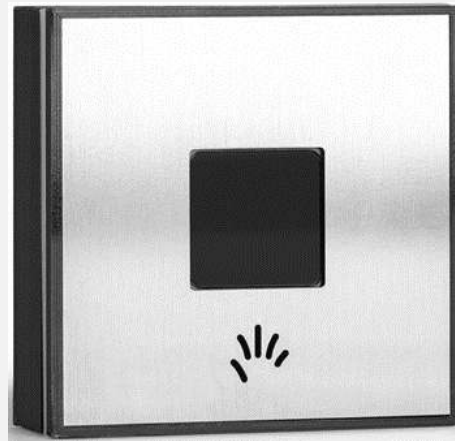
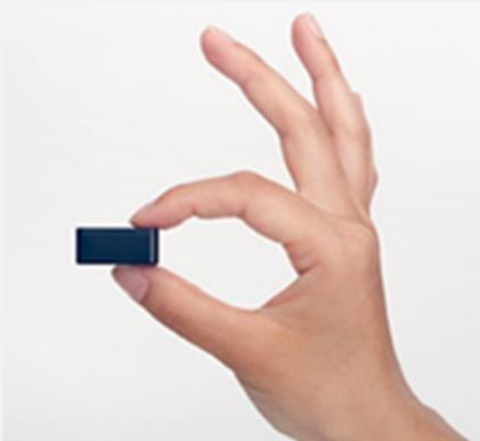


Why Biometry?

Is this necessary? Proportionality?

- **Unique and Personal**
 - No person change possible
 - No theft or loss possible
 - Never forget again
- **Environmentally friendly**
 - Badge = 6gr plastic.
- **Contactless**
 - Very hygienic
- **In principle not removable**
- **High level of acceptance by consumers**
 - VIAS Institute survey
 - [file:///C:/Users/wim/AppData/Local/Packages/Microsoft.MicrosoftEdge_8wekyb3d8bbwe/TempState/Downloads/infographics-burgers-en-biometrie-nl%20\(1\).pdf](file:///C:/Users/wim/AppData/Local/Packages/Microsoft.MicrosoftEdge_8wekyb3d8bbwe/TempState/Downloads/infographics-burgers-en-biometrie-nl%20(1).pdf)





Why PALMKI?

- High Security
- Comfort
- Hygienic
- Environment friendly

WHY PALMKI?

Security

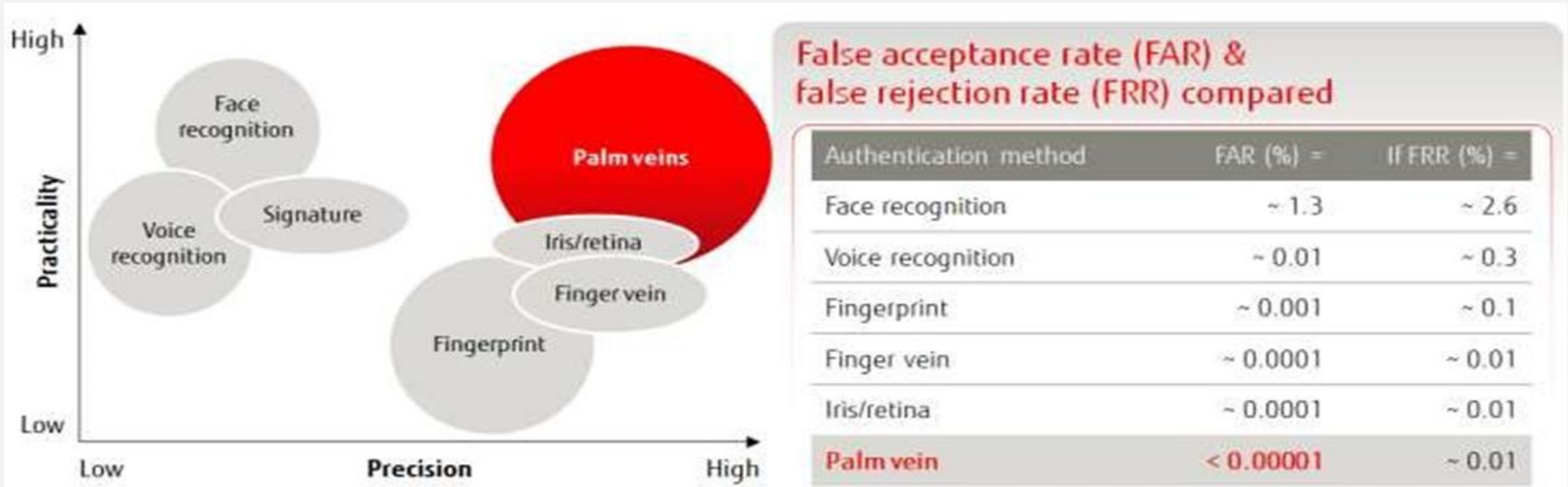
- Highest level of security

HYGIENE

- Contactless

Experience

- Increase comfort



WHAT?

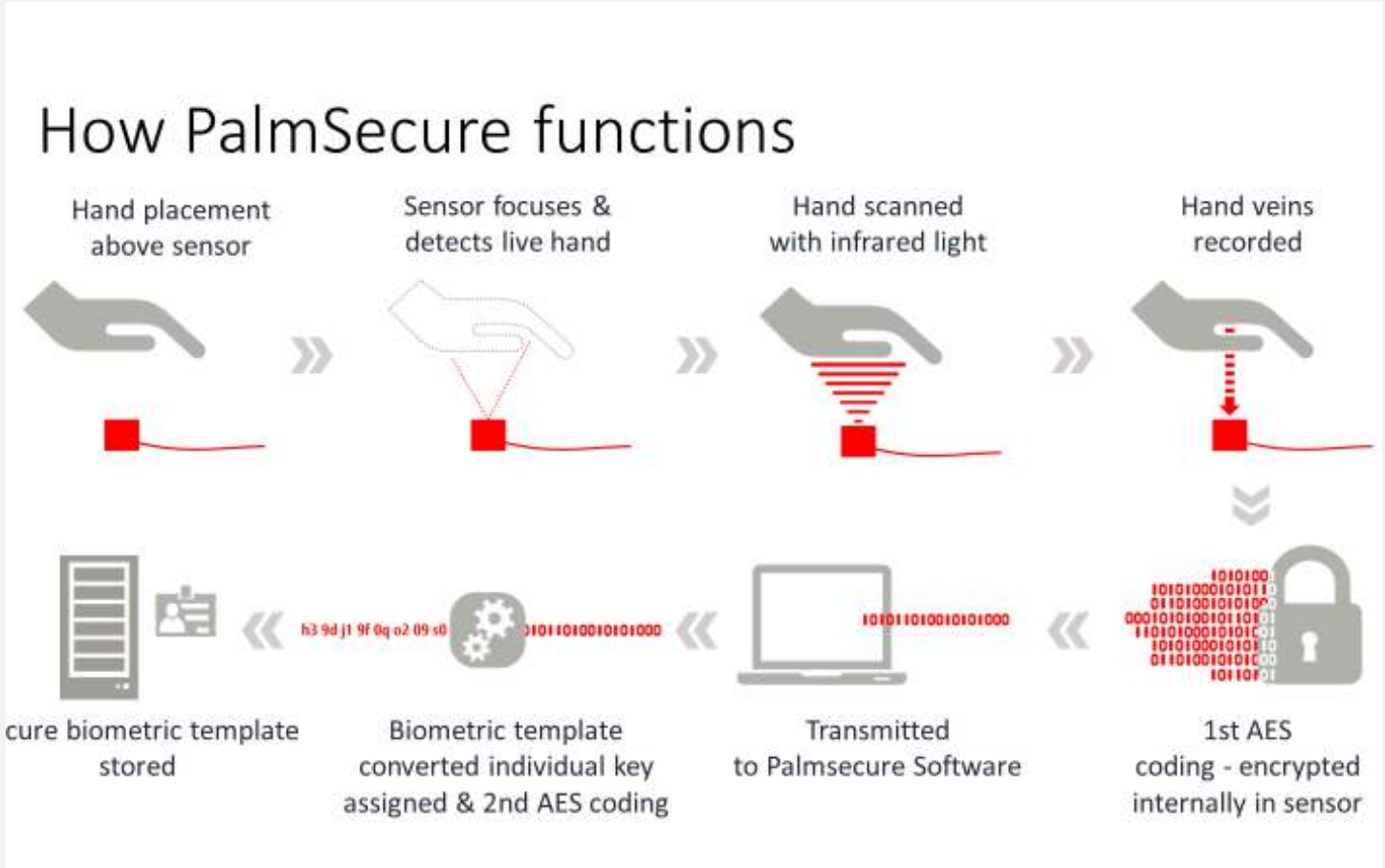
An ALL-IN Solution

- **Palm key**

- Key
- Different applications
 - Access to Buildings, Data, ...
 - Time registration
 - Payments
 - Copiers, vending machines,...

- **Palm Secure**

- Fujitsu
- Vein pattern recognition
- 5 Mio reference points
- **Hashed code**
- Blood flow always necessary



PALMKI + BADGE

2 Factor Authentication

- **High level Security**
 - No person change possible
 - Badge transmission = EXCLUDED
- **GDPR Compliant**
 - Local storage on badge of Hand palm code data
 - No central storage => Code data stays with user on badge
- **Stand Alone use**
 - No server ⇔ No network ⇔ no central database
 - Local device performs “VERIFY” = 1 / 1
 - EASY to INSTALL
- **Very high speed execution**
 - < 1 sec
- **Need of BADGE anyway**
 - 1st Visual Check
 - Economics
 - High number of users
 - High security not necessary everywhere / anyone
 - Server rooms / Pharmacies / ...
 - Executive members / Security Agents



PALMKI only

1 Factor Authentication

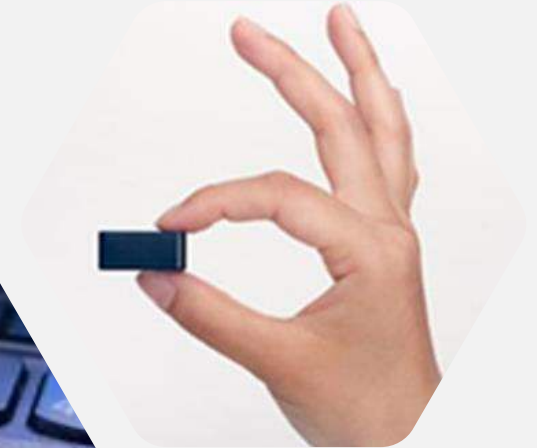
- **High level Security**
 - No person change possible
- **Comfort**
 - No loss, theft, forgotten (password, badge, pincode, key,...)
 - Always “at hand”
- **Environmental friendly**
 - No more accessories (badge = 6 gr plastic)
- **Network use**
 - Server ↔ Network
 - Local device performs “VERIFY” on server= 1 / N
- **High speed execution**
 - < 2 sec
- **ONLY or EXTRA layer of Security**
 - Economics
 - high number of user
 - High security not necessary everywhere / anyone
 - Server rooms / Pharmacies / ...
 - Executive members / Security Agents



PALMKI +++

Every Combination You Can Think Of ...

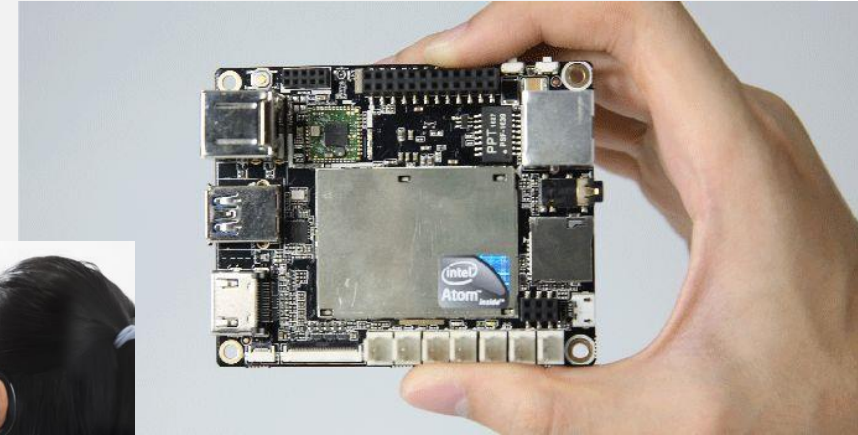
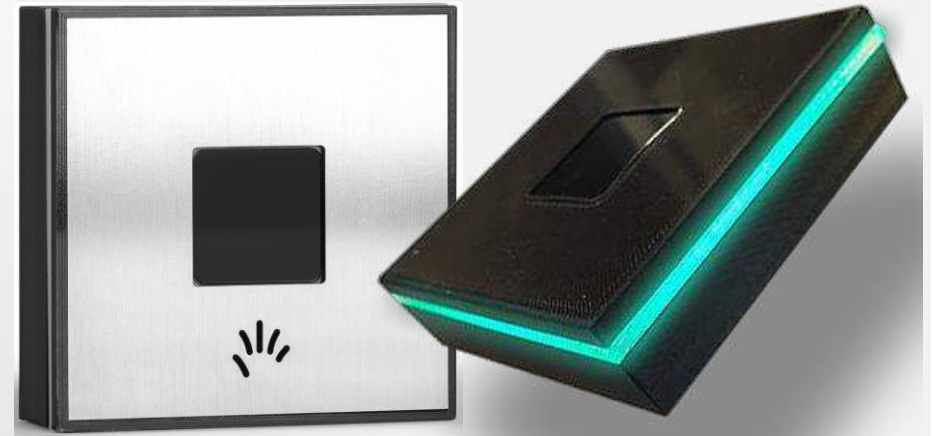
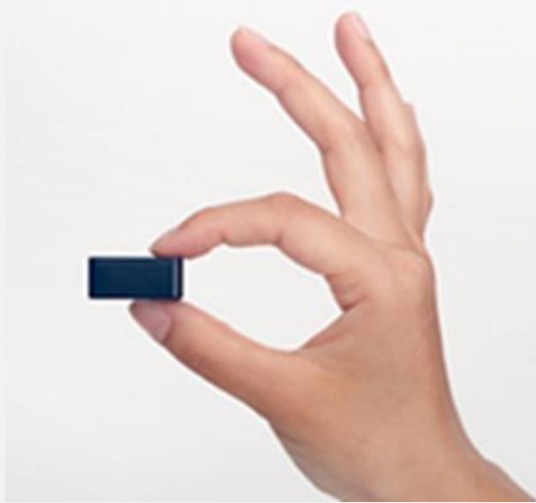
- **Via API connection**
 - MQTT protocol
- **Some possible connections**
 - Payments
 - Access control
 - Time Registration
 - Machines
 - Vending machines
 - Copiers
 - Heavy machinery with special license
 - Forklift trucks
 - Halyard
 - Elevator
 - Trucks
-

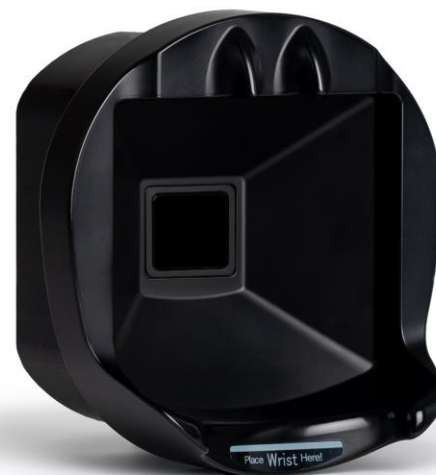
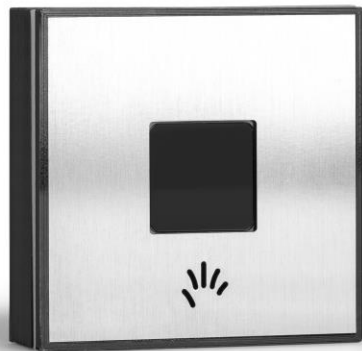


HOW?

An ALL-IN Solution

- Sensor
- Hardware devices (tailormade)
- PCB board
- Software (if needed)
- Project Management
- Installation
- Education
- Support
- After Service





Gouvernement

Access control 2 factor authentication

Highest level of SECURITY

Situation

- Security Control by agents
- 55 localizations with badge reader
- Time planning tool

Problem = Personality check

- Badge can be copied, stolen.

Solution = palmki

- Badge = 1st visual control
- Explicit control PALMKI = Unique Palm Vein structure
- No person switch possible



HB Antwerp Diamant Experts <https://hbantwerp.com/>

High Security

Technology driven

INNOVATIEF IMAGO

Problem = Badge not safe enough

- Danger for copying and passing along
- Can be stolen
- Easy to forget your badge somewhere

Solution = palmki

- No need for a badge anymore
- 100% secure check = Person & Time



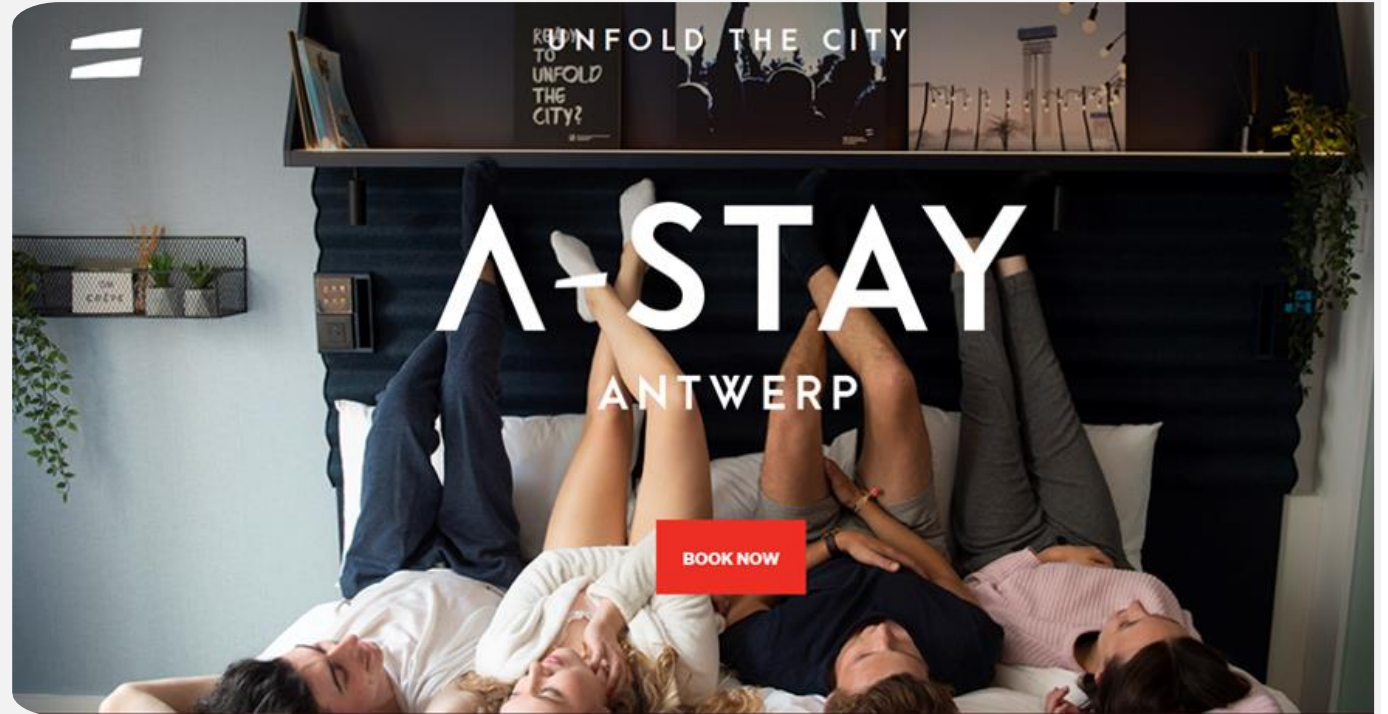
Hotel in Antwerp

Hospitality = **comfort** for the guests

Future Proof Hotel

- Check IN
- Access to room
- Payments Bar / Resto
- Extra access to Fitness (if reserved)
- Check Out

- <https://atv.be/nieuws/hotel-van-de-toekomst-in-antwerpen-geen-receptie-en-gsm-is-afstandsbediening-88477>
- <https://kanaalz.knack.be/nieuws/besix-en-xior-oprichter-lanceren-eerste-a-stay-hotel/video-normal-1535387.html>



PLOPSA

Comfort en special experience

Extra feature only for hotel guests = VIP **treatment**

INNOVATIVE IMAGE

Problem = Badges lost

- Children lose the badge easily
- Where to put the badge in AQUALAND
- Forget to return after the stay

Solution = palmki

- No need anymore for a badge
- Tight control= Person and Time



ENCON Infinity building

Environment friendly Payment Solution

Problem = Payment

- Now in Excel
- Extra admin for receptionist

Solution = palmki

- Strict control = Person and Time
- Validation via Cashless payment system



UHasselt

Secure Access control

AUDIT = Almost every one can enter server room

Problem = Badges exchange

- Personalized and anonymous badges
- Internals en externals
- No explicit control

Solution = palmki

- Explicit control = Person and Time
- No exchange anymore with externals



Xenia - Vesta

HORECA

HR for FLEX workers

Horeca for the FUTURE

- Time registration
- Planning tool check
- Contract = automated
- Dimona aangifte (for inspection) = automated
- <https://kanaalz.knack.be/nieuws/belgische-software-maakt-dagelijks-gebruik-handpalmscan-mogelijk/video-normal-1561739.html>



Let's talk!



palmki
by PerfectID

